



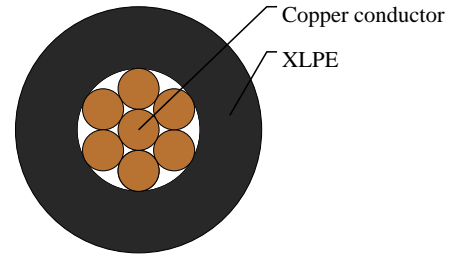
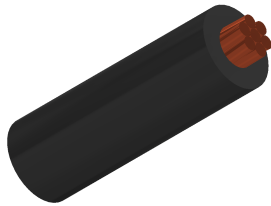
Caledonian

Automotive Cables

www.caledonian-cables.com

marketing@caledonian-cables.com

AESSXF 1C0.22



APPLICATIONS

This XLPE insulated single-core cable is used in low voltage circuits in automobiles(vehicles and motorcycles).

STANDARDS

JASO D611 ;ES SPEC

CABLE CONSTRUCTION

Conductor: Annealed stranded copper

Insulation: Cross-linked Polyethylene (XLPE)

Standard Compliance: JASO D611 ;ES SPEC

PHYSICAL AND THERMAL PROPERTIES

Operating temperature: -45 °C to +120 °C

Rated temperature: 120°C

Rated voltage up to 60V

DIMENSION AND PARAMETERS

No. of Cores × Cross-sectional Area	No. and Dia. of Wires	Diameter of Conductor (max.)	Nominal Insulation Thickness	Overall Diameter (min.)	Overall Diameter (max.)	Approx. Weight	Electrical Resistance at 20°C (max.)
No. × mm ²	no./mm	mm	mm	mm	mm	kg/km	MΩ/m
1x0.22	7/0.2	0.6	0.3	1.2	1.3	3.3	84.4